

ALL REGISTERED VOTERS IN VIRGINIA MAY VOTE EARLY, EITHER IN PERSON OR BY MAIL.

WAYS TO VOTE

RECEIVE A BALLOT BY MAIL

Request a ballot at elections.virginia.gov/absentee by **5 p.m., July 24**. You may return your ballot:

- **By mail:** postmarked on or before **August 4**.
- **Before Election Day:** to your voter registration office, drop-off location, or satellite location.
- **On Election Day (by 7 p.m.):** to your voter registration office, any polling place, or drop-off location.

IN PERSON BEFORE ELECTION DAY

From June 19 through August 1: You can vote early at your local voter registration office. A satellite voting location may also be available. Bring acceptable ID.

Early voting begins on Thursday, June 18 in localities closed to observe the Juneteenth state holiday on June 19.

Find your local voter registration office: elections.virginia.gov/VRO

IN PERSON ON ELECTION DAY

On Tuesday, August 4, vote at your polling place. **Polls are open from 6 a.m. until 7 p.m.**

Bring acceptable ID.

Find your polling place: elections.virginia.gov/VoterInfo



Dates to Know

June 19 - First day to vote early at your local voter registration office or satellite voting location. Find your local office: elections.virginia.gov/VRO

Early voting begins on Thursday, June 18 in localities closed to observe the Juneteenth state holiday on June 19.

July 19 (Sunday) – Local voter registration offices are open for in-person voting

July 24 (by 5 p.m.) - Last day to request that a ballot be mailed to you

July 24 - Last day to register or update your address to vote a regular ballot for the election

Voters may register in person after July 24, through Election Day, and vote using a provisional ballot

July 25 (Saturday) - Local voter registration offices are open for in-person voting

July 26 (Sunday) - Local voter registration offices are open for in-person voting

August 1 (Saturday) - Last day to vote early in-person at your local voter registration office

August 4 (Election Day) - Vote at your polling place. Polls are open 6 a.m. to 7 p.m.



★ VIRGINIA ★
DEPARTMENT
of ELECTIONS

Virginia Voter Pocket Guide

August 4, 2026 Primary Election



VOTE.VIRGINIA.GOV

INFO@ELECTIONS.VIRGINIA.GOV

(800) 552-9745 / TTY 711



BRING YOUR ID

You need to show an acceptable ID or sign an ID Confirmation Statement to vote in person for an election.

Acceptable Forms of Identification

- Voter confirmation documents
- Virginia DMV-issued driver's license or ID card (current or expired)
- United States Passport (valid)
- Employer-issued photo ID (valid)
- Student ID issued by a Virginia college / university / high school (valid)
- Student photo ID issued by U.S. college / university (valid)
- Other U.S. or Virginia government-issued ID
- U.S. Military ID (valid)
- Virginia Voter Photo ID Card
- Original or copy of any current utility bill, bank statement, government check, paycheck, or other government documents with your name and address (within the past 12 months)

Full list of acceptable IDs:
elections.virginia.gov/VoterID

WHAT TO EXPECT AT THE POLLS

When you arrive, election officers will be there to help you:

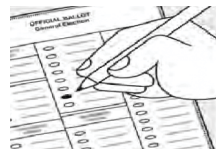
1. CHECK IN

Say or write your name and address. Show an acceptable ID.

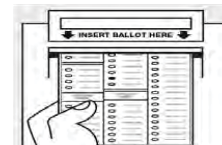
2. RECEIVE & CHECK BALLOT

Make sure it includes all contests for your precinct.

3. GO TO BOOTH & VOTE



On your ballot, fill in the oval next to your choice(s).



When you're done, scan your ballot.

An election officer will assist with any issues.

VOTER RIGHTS

- ★ Ask for a new ballot if you want to change your vote before you cast it.
- ★ Vote a provisional ballot if your name doesn't appear on the voter list or you forgot to bring an acceptable ID (and refuse to sign an ID Confirmation Statement).
- ★ Vote if you are in line by 7 p.m. on Election Day when the polls close.

For more, visit: elections.virginia.gov/rights

ACCESSIBLE VOTING

There are accessible voting options at each polling place and early voting location.

If you are 65 or older, or have a disability, you can vote from your vehicle at the polls on Election Day or at your local voter registration office before Election Day. Locate a curbside voting sign for instructions on how to alert elections staff of your need for curbside assistance. You may also bring someone with you who can assist you with voting. You can get help reading or writing from an election officer or your own assistant.

If you are blind, have low vision, or have impaired manual dexterity (e.g. have a print disability), you may vote an absentee ballot using an electronic ballot marking tool.

Contact your local voter registration office for details:

elections.virginia.gov/VRO

For more information:

elections.virginia.gov/accessible

SERVE AS AN OFFICER OF ELECTION*

(*Also known as a poll worker)

Officers of Election are always in demand.

Learn more and apply at
elections.virginia.gov/officer

